



Concession boundaries of SAFACAM plantation - Cameroon



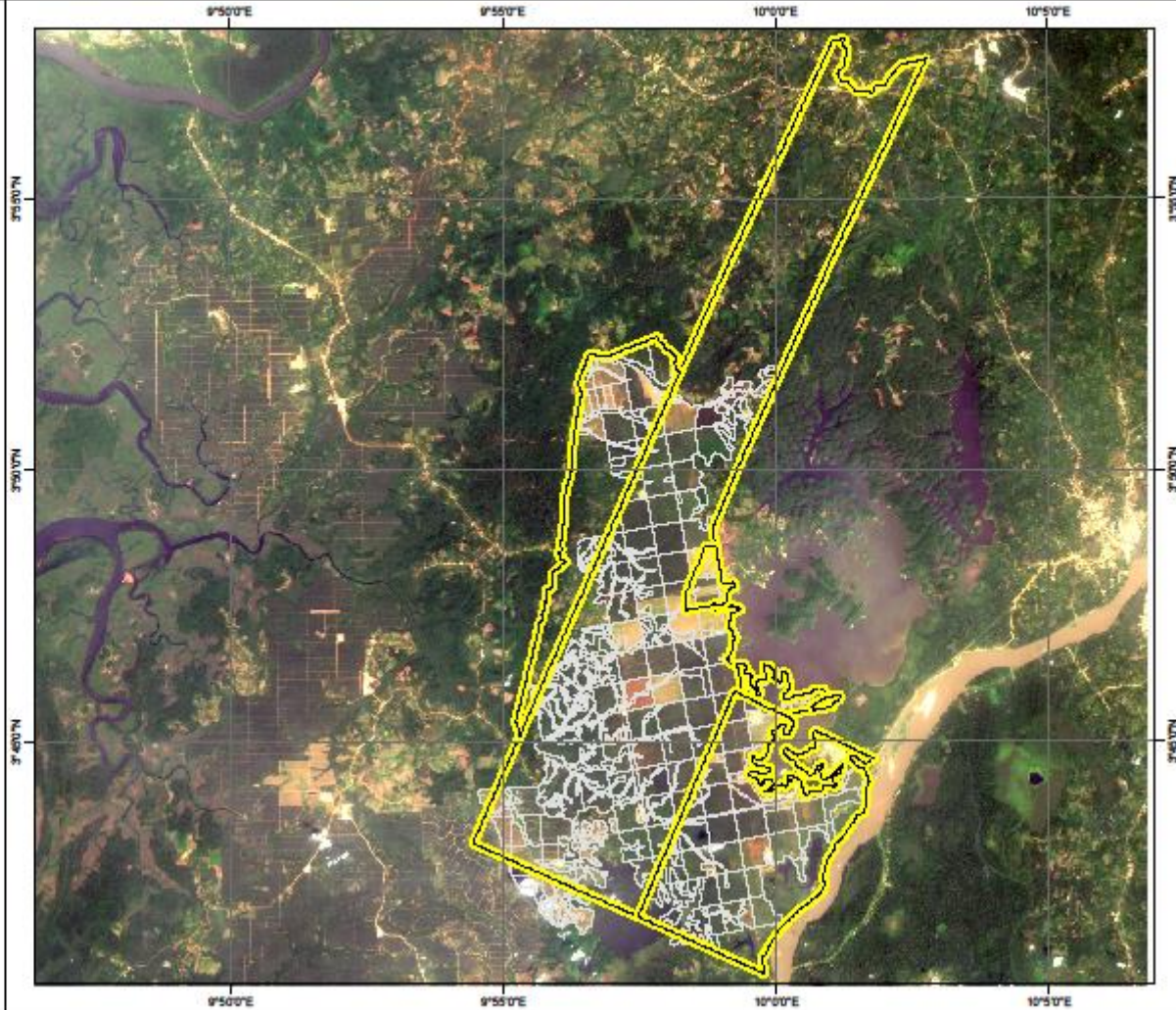
Legend :

- Concession - Initial boundaries
- Planted blocks

Source :

- > Concession limits : original boundaries, the limits have evolved (new survey on going)
- > Background : Landsat 8 - jan. 2016 - true color
- > Date of edition : June 2017
- > Author : Socfinco SA

Projection system..... UTM
 Zone..... 32 North
 Ellipsoid..... WGS84
 Datum..... WGS84
 UTM Grid..... 5°



Safacam is an old standing plantation that was created in 1897 by the “Société Africaine Forestière et Agricole”. Initially being developed as a rubber plantation it was partially converted in an oil palm estate during the seventies in order to supply local demand in palm oil.

In 2014 it was acquired by the Socfin group. Few blocks planted in agreement with the local communities are being demarcated. The boundaries are therefore not identified on the map.

[KML file](#)