



Concession boundaries of SOGB plantation - Côte d'Ivoire



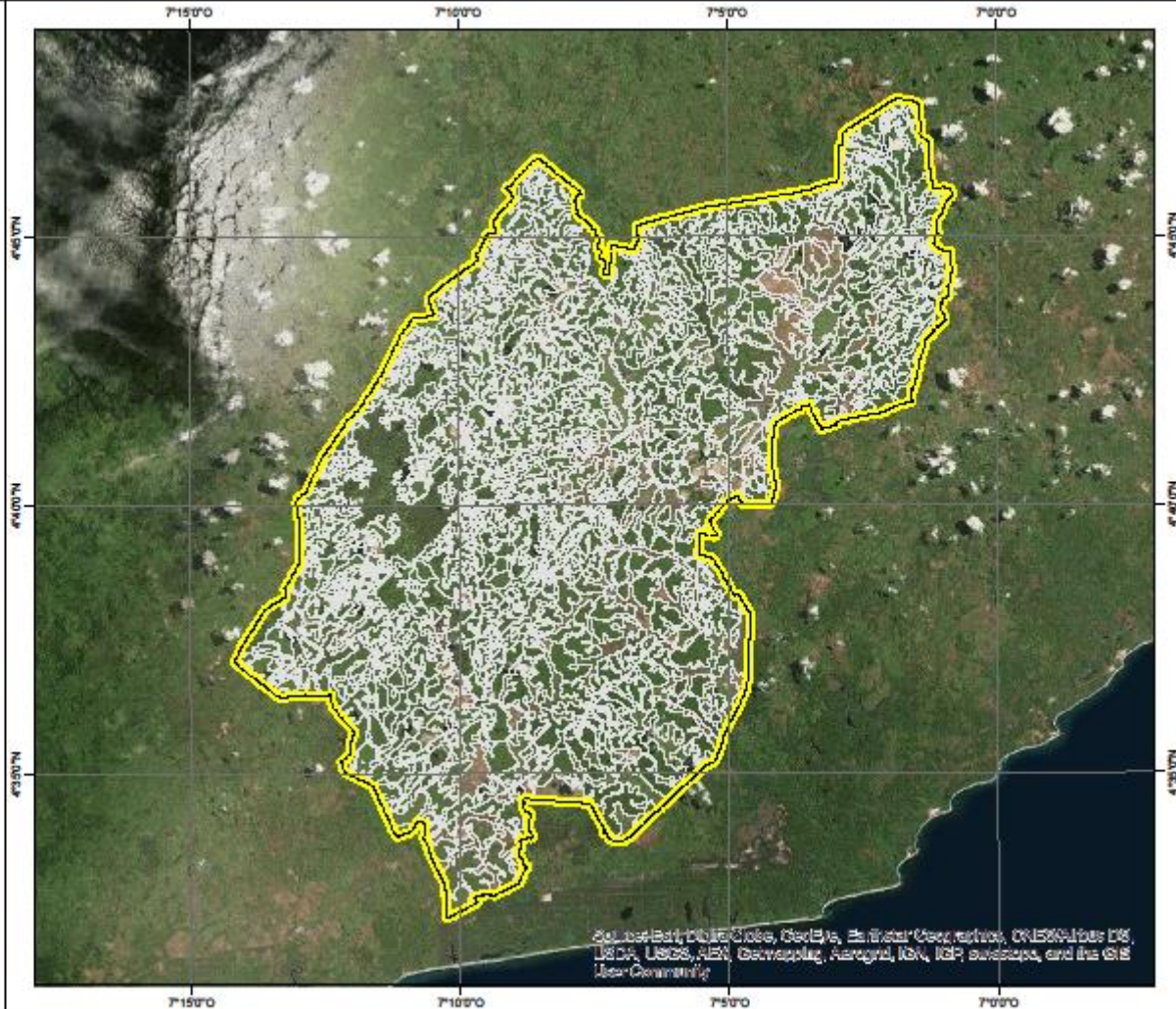
Legend :

-  Concession
-  Planted blocks

Source :

- > Background : ESRI Imagery
- > Date of edition : June 2017
- > Author : Socfinco SA

Projection system.....UTM
 Zone.....29 North
 Ellipsoid.....WGS84
 Datum.....WGS84
 UTM Grid.....5



The “Société des Caoutchoucs de Grand Béréby” was created by the Government of Côte d'Ivoire with the Michelin group as technical partner. The objective was to bring economic and regional development to the South Western part of Côte d'Ivoire.

The SOGB was acquired, in the context of a privatisation exercise, by a joint venture of Socfin with local investors. This effort was supported by the French and the German Development Banks. Additionally, an important smallholders' programme was started.

Today more 23 332 ha are developed; an important HCV area was conserved as from the beginning of the privatisation.

[KML file](#)