

Concession boundaries of KCD plantation - Cambodia



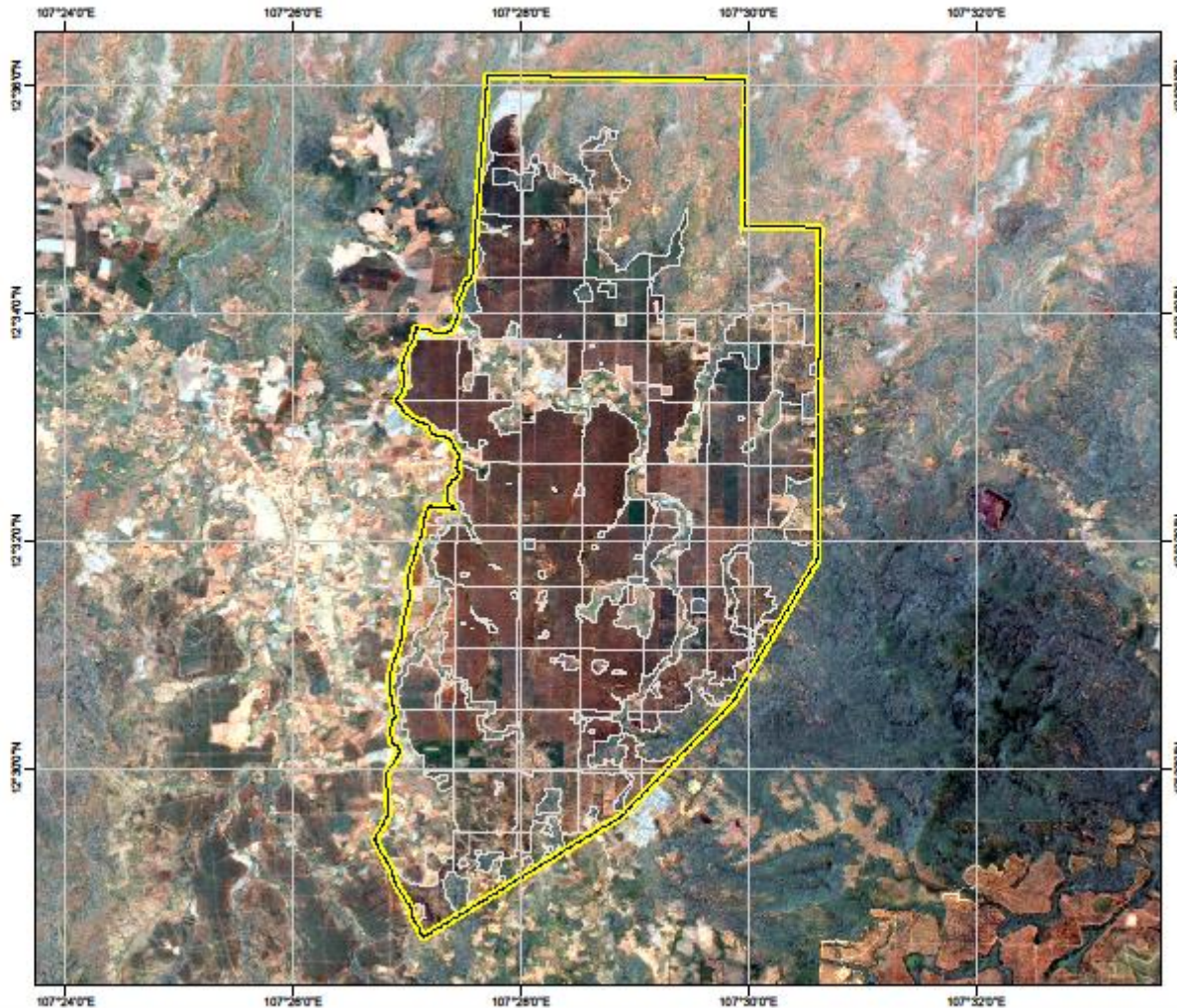
Legend :

-  Concession
-  Planted blocks

Source :

- > Concession limits : GPS survey
- > Background : Landsat Imagery 2017, true color
- > Date of edition : June 2017
- > Author : Socfinco SA

Projection system.....UTM
 Zone.....48 North
 Ellipsoid.....WGS84
 Datum.....WGS84
 UTM Grid.....2°



The Cambodian war destroyed all economic activity in country and as such the Government invited investors to reconstruct.

As a former investor in Cambodia the Socfin group was requested to develop concessions in the Mondulkiri province. Today two rubber concessions are developed covering a planted area 7 193 ha. It must be emphasized that illegal logging is rampant in Cambodia. Socfin works together with the authorities to curb this tendency.

[KML file](#)